

P/N 202038 Optical Sensor

Automated Equipment, LLC

5140 Moundview Drive
Red Wing, Minnesota 55066
Phone: 1-800-248-2724
1-651-385-2273
Fax: 1-651-385-2172
<http://www.autoequiplc.com>

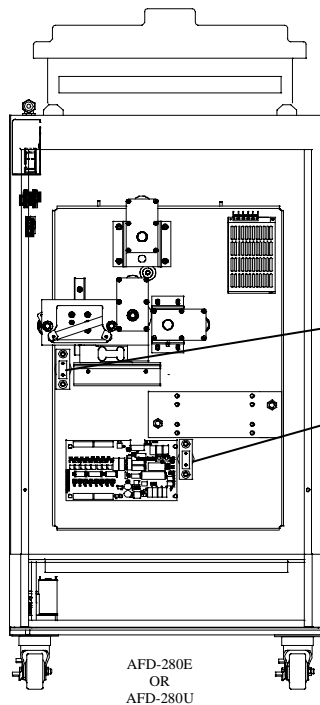


Optical Sensor P/N 202038 Replacement and Adjustment

Note: This sensor is a direct replacement for the bolt style sensor. A sensor window, P/N 202619, must be installed to keep debris from getting into the cabinet.

Tools Required

- Small flat blade screwdriver
- 3/16" allen wrench
- Adjustable wrench
- Wire cutter
- Wire stripper



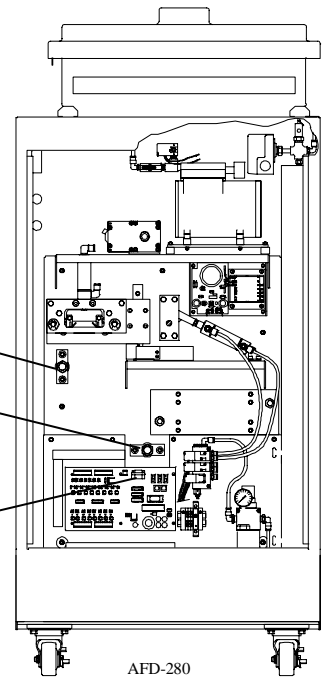
AFD-280E
OR
AFD-280U

Disassembly

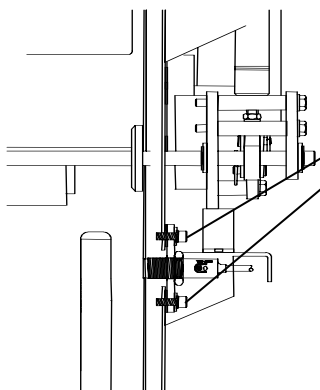
- Turn off the dispenser power and unplug the power cord.
- Remove the back panel.
- Locate the:

Lift (upper) Sensor
OR
Guide (lower) Sensor.

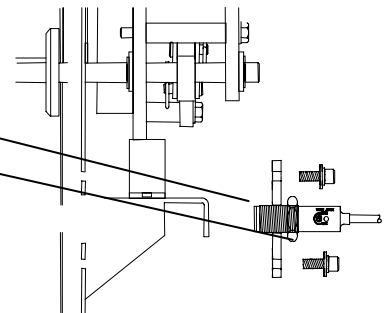
The load cell connector must be disconnected for guide sensor replacement on AFD-280 dispensers.



AFD-280



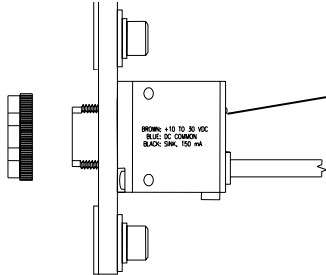
- Remove the Sensor Bracket Bolts.
- Remove the sensor and bracket.
- Loosen the Sensor Jam Nut.
- Remove the faulty sensor from the mounting bracket and disconnect the wiring.



P/N 202038 Optical Sensor

Automated Equipment, LLC

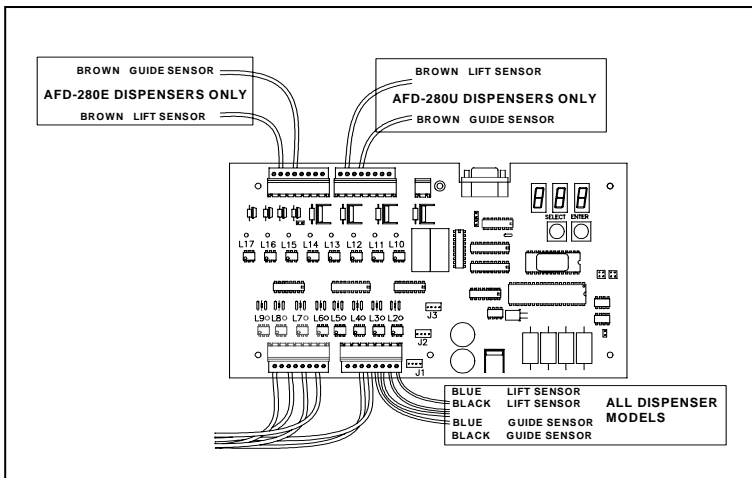
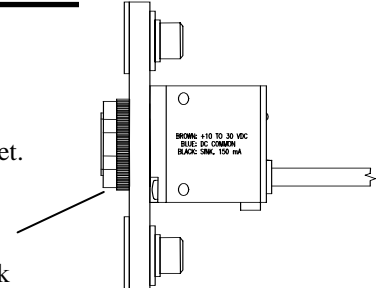
5140 Moundview Drive
Red Wing, Minnesota 55066
Phone: 1-800-248-2724
1-651-385-2273
Fax: 1-651-385-2172
http://www.autoequipllc.com



Installation

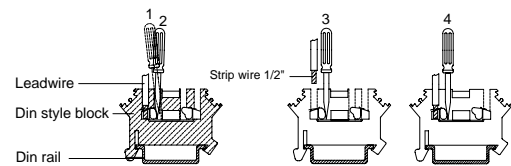
Thread the sensor all the way into the mounting bracket.

Thread the securing nut onto the exposed thread to lock the sensor in place.

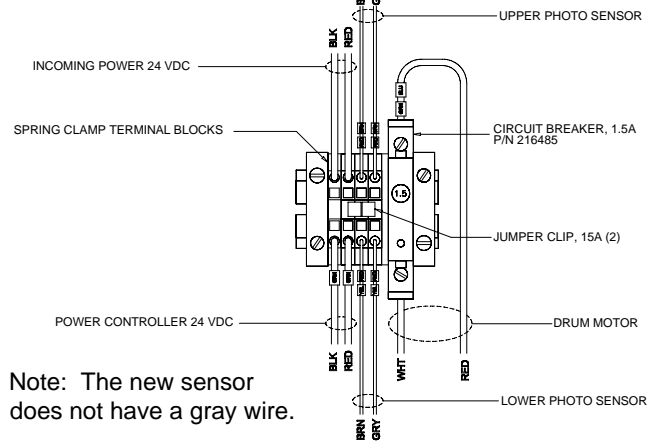


AFD-280

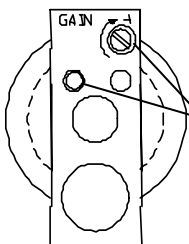
Side Views



Front View



Note: The new sensor does not have a gray wire.



Install the new sensor assembly into the dispenser.

Connect the wiring to the same terminations as the old sensor.

Note: The white wire that was used with the round SIC Optic sensor is not needed with the new sensor.

Confirm sensor range of 4 to 6 inches: Move your hand toward the front of the sensor. The light on the sensor should turn on when your hand is 4 to 6 inches from the sensor.

Adjust the sensor range if needed. Turn the adjusting screw clockwise to increase or counter clockwise to decrease the sensor range.

Reassemble the dispenser and verify proper operation.