

P/N 202582 Manifold

Automated Equipment, LLC

5140 Moundview Drive
Red Wing, Minnesota 55066
Phone: 1-800-248-2724
1-651-385-2273
Fax: 1-651-385-2172
<http://www.autoequi LLC.com>



AFD-280 or AFD-280U Air Manifold P/N 202582 Installation and Adjustment

Tools Required

- Small flat blade screw driver
- 9/32" wrench
- 5/32" allen wrench

Procedure

Removal

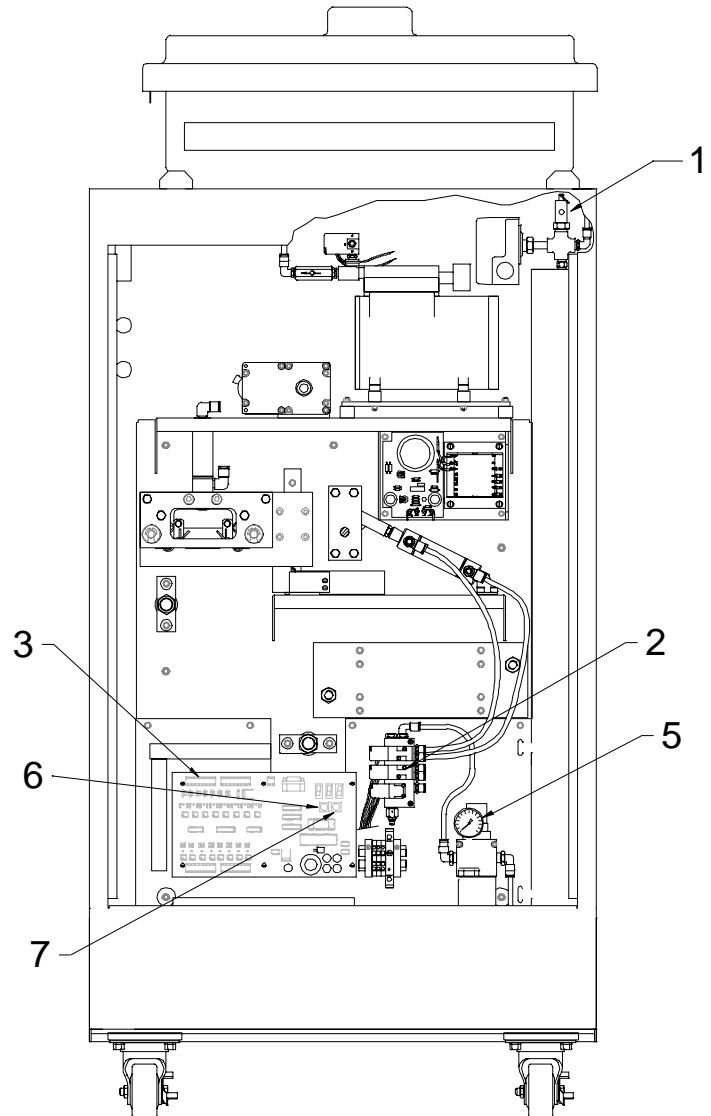
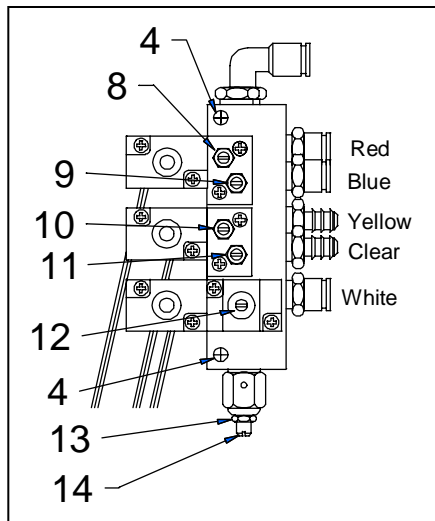
1. Turn the power switch off and unplug the power cord.
2. Pull up on the pressure relief valve ring (item #1) to drain the air pressure.
3. Disconnect all airlines from the manifold (item #2).
Push the hose into the fitting and push in on the flange at end of the fitting. While pushing in on the flange pull out on the hose.

The hoses on the barbed fittings may have to be cut off.

4. Unplug the wire connector (item #3) from the controller board by pushing it up.
5. Remove the two screws (item #4) securing the manifold to the chassis.

Installation

1. Mount the replacement manifold (item #2) to the chassis with the two screws (item #4).
2. Connect the wire connector (item #3) to the controller board.
3. Connect the airlines to the manifold (item #2).
4. Plug the power cord in and turn the power on.
5. Check for air leaks.
6. Check cylinder speeds and make required adjustments. (page 2)
7. Check the dispenser for proper operation and put it back in service.



P/N 202582 Manifold

Automated Equipment, LLC

5140 Moundview Drive
Red Wing, Minnesota 55066
Phone: 1-800-248-2724
1-651-385-2273
Fax: 1-651-385-2172
<http://www.autoequipllc.com>



Stopgate Speed Adjustment

- Verify the regulator pressure is at 30psi (item #5).
- Select Function 14 (F14) by pressing the select button (item #6) repeatedly and then press the enter button (item #7).
- At this point pressing the enter button (item #7) again will change the state of the stopgate. (if the stopgate is closed it will open and if the stopgate is open it will close)
- Stopgate speed should be 1 second closing and 1 second opening.
- Turn the "A" speed screw (item #8) clockwise to decrease and counter clockwise to increase the stopgate closing speed. Tighten the nut when the closing speed is correct.
- Turn the "B" speed screw (item #9) clockwise to decrease and counter clockwise to increase the stopgate opening speed. Tighten the nut when the opening speed is correct.
- Press the select button (item #6) once to return to normal operation when the stopgate speed is correct.

Accumulator Door Speed Adjustment

- Verify the regulator pressure is at 30psi (item #5).
- Select Function 13 (F13) by pressing the select button (item #6) repeatedly and then press the enter button (item #7).
- At this point pressing the enter button (item #7) again will change the state of the accumulator doors. (if the accumulator doors are closed they will open and if the accumulator doors are open they will close)
- Accumulator door speed should be 1 second closing and 1/2 second opening.
- Turn the "A" speed screw (item #10) clockwise to decrease and counter clockwise to increase the accumulator door closing speed. Tighten the nut when the closing speed is correct.
- Turn the "B" speed screw (item #11) clockwise to decrease and counter clockwise to increase the accumulator door opening speed. Tighten the nut when the opening speed is correct.
- Press the select button (item #6) once to return to normal operation when the accumulator door speed is correct.

Lift Speed Adjustment

Note: the lift switches must be adjusted properly before trying to adjust the lift speed.

- Verify the regulator pressure is at 30psi (item #5).
- Select Function 12 (F12) by pressing the select button (item #6) repeatedly and then press the enter button (item #7).
- Press the green restart button on the front of the dispenser to clear any errors.
- At this point pressing the enter button (item #7) again will change the state of the lift (if the lift is up it will go down and if the lift is down it will go up) and display the lift speed in 1/10ths of a second. 24 would be read as 2.4 seconds.
- Lift cylinder speed should be between 2.2 and 2.6 seconds, with the lift up speed being closer to 2.2 seconds and the down speed being closer to 2.6 seconds.
- Turn the lift up speed screw clockwise (item #12) to decrease and counter clockwise to increase the lift up speed.
- Loosen the jam nut (item #13) and turn the lift down speed screw (item #14) clockwise to decrease and counter clockwise to increase the lift down speed. When the down speed is correct hold the screw (item #14) and tighten the jam nut (item #13).
- Press the select button (item #6) once to return to normal operation when the lift speed is correct.